

# MONTHLY MEMBERSHIP PROGRESS REPORT

LOCATION LOUISIANA

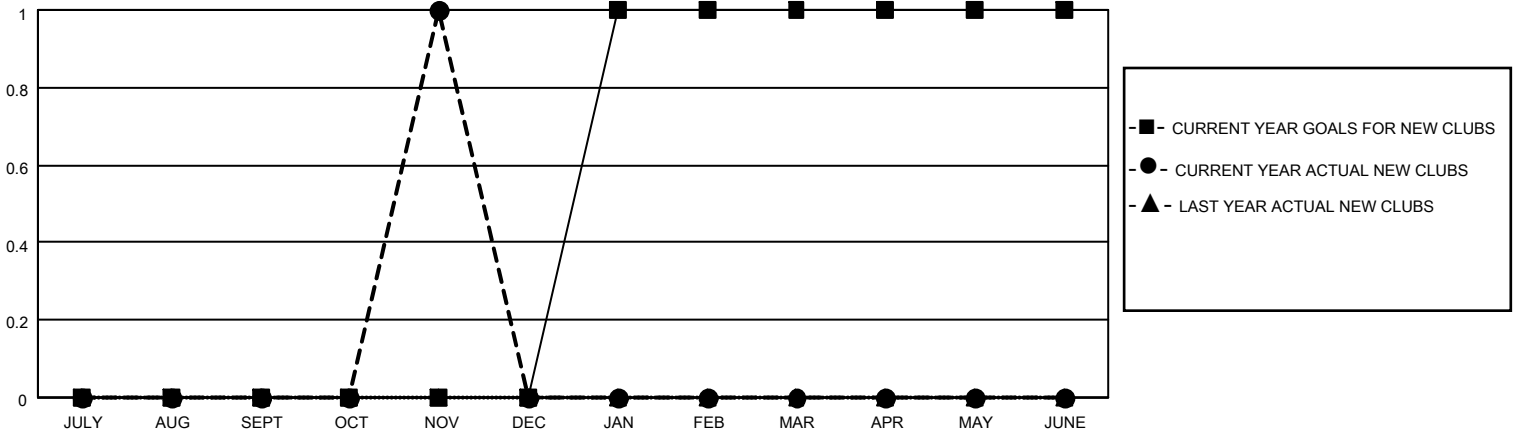
District 8 S

Results as of: 11/30/2020

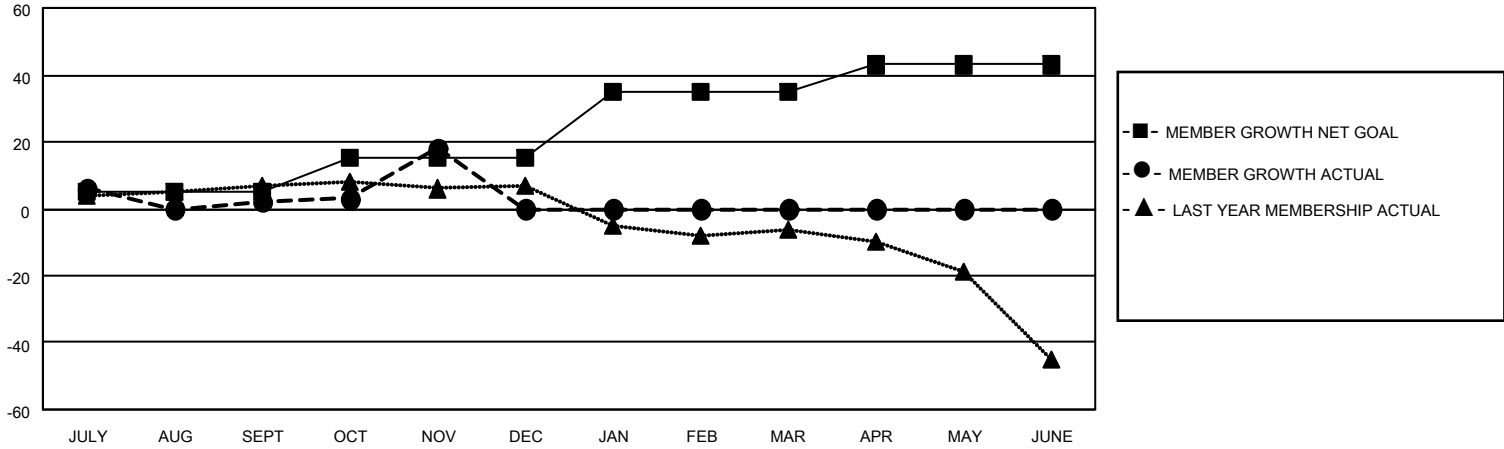
Clubs			
RESULTS FOR 2020-2021			
QUARTER	NEW CLUB GOAL	NEW CLUBS	DROPPED CLUBS
JULY/AUG/SEPT	0	0	0
OCT/NOV/DEC	0	1	0
JAN/FEB/MAR	1	0	0
APR/MAY/JUNE	0	0	0

Members			
RESULTS FOR 2020-2021			
QUARTER	MEMBER GROWTH NET GOAL	MEMBER GROWTH ACTUAL	DROPPED MEMBERS ACTUAL (including transfers)
JULY/AUG/SEPT	5	14	8
OCT/NOV/DEC	10	29	13
JAN/FEB/MAR	20	0	0
APR/MAY/JUNE	8	0	0

**GOALS AND ACTUAL NEW CLUBS CUMULATIVE**



**GOALS AND ACTUAL MEMBERS CUMULATIVE**



**DROPPED CLUBS: 0**

10 CLUBS OF 36 ADDED 1 OR MORE NEW MEMBERS

<u>GENDER DISTRIBUTION</u>	
MALE	534 (55.68%)
FEMALE	425 (44.32%)

<u>DROPPED MEMBERS</u>	
DECEASED	7
CLUB CANCELLED	0
OTHER	14
<b>TOTAL</b>	<b>21</b>

[CLICK HERE FOR CUMULATIVE MEMBERSHIP DATA](#)

TOTAL FAMILY UNIT MEMBERS	239
FAMILY MEMBERS PAYING HALF DUES	124